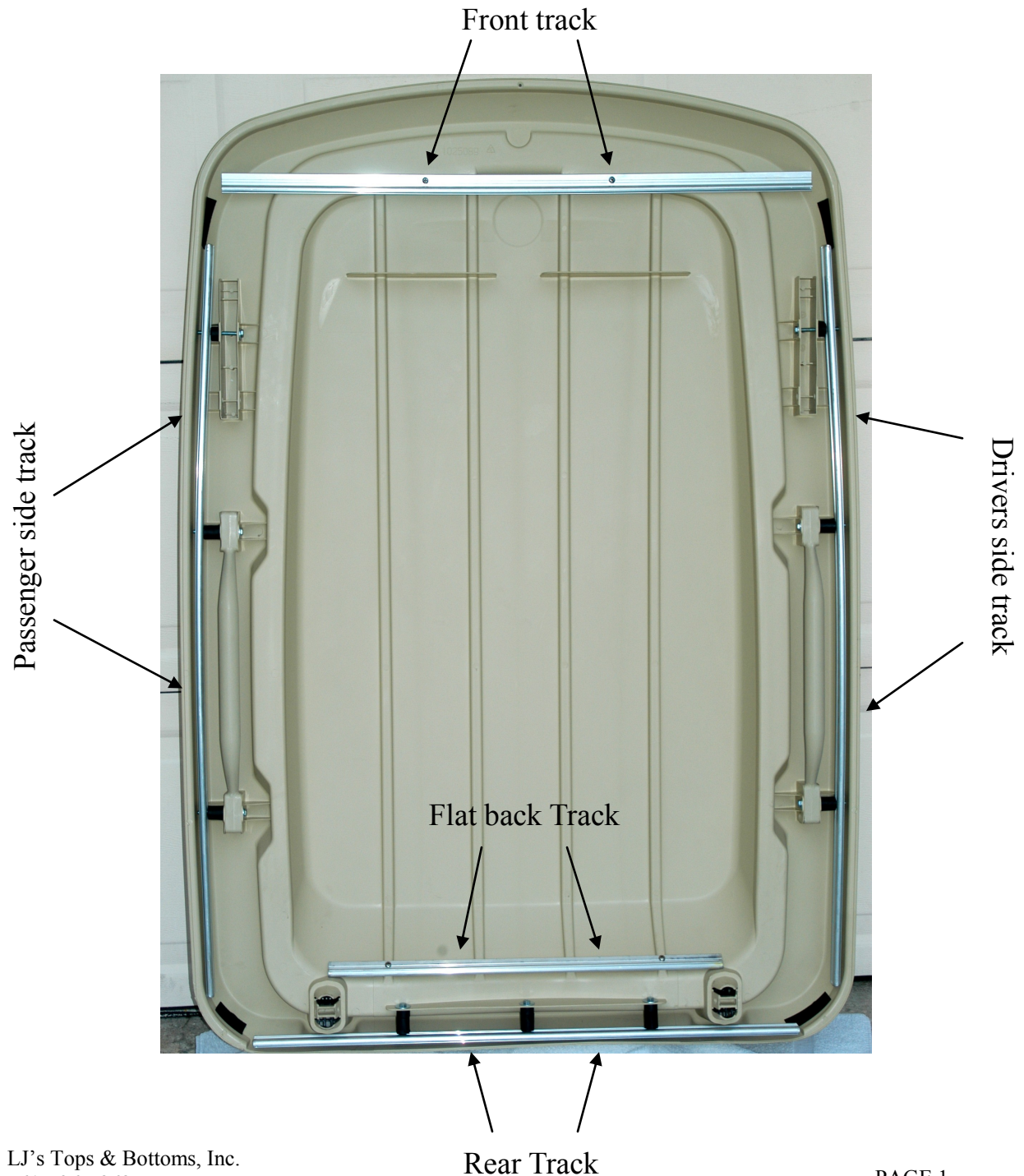
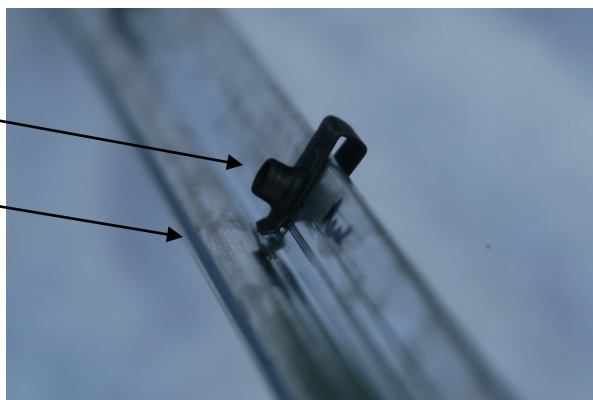


Club Car Precedent Installation Instructions



Sides & Rear tracks— Install clip nuts over pre-drilled holes in tracks so that the nut part of clip is on the same side as the opening in tube.



Side Tracks- Picture shown is the passenger side of the golf car top.

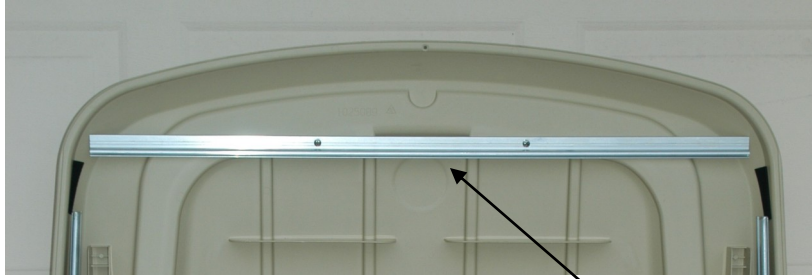
Hardware needed for each side: Bolts, 1 –2 1/4" , 2– 3", 3 flat washers, 1– 1/2" spacer, 2– 1" spacers, 3 clip nuts.

- Step 1: Remove front top support bolt ,and then remove 2 handle bolts .
- Step 2: Install clips nuts inside track as shown above.
- Step 3: Starting at front of top, install 2 1/4" bolt w/flat washer through front top support hole. Add 1/2" spacer, then insert bolt into track with clip nut.
- Step 4: Using 3" bolt w/flat washer insert bolt through front handle hole. Add 1" spacer and insert bolt through track with clip nut.
- Step 5: Repeat step 4 in rear handle hole. Bolt must be tapped in with hammer and punch. It is suggested that you put tape on the top to prevent bolt head from marking top.

REPEAT INSTRUCTIONS FOR DRIVERS SIDE!

For further installation help call:

LJ's Tops & Bottoms, Inc.
561-736-7868



Front Valance Track— Slide front valance onto track so that good side of valance and flat side of track face forward. Secure track by using the 2 existing holes in top with sheet metal screws included in the kit.

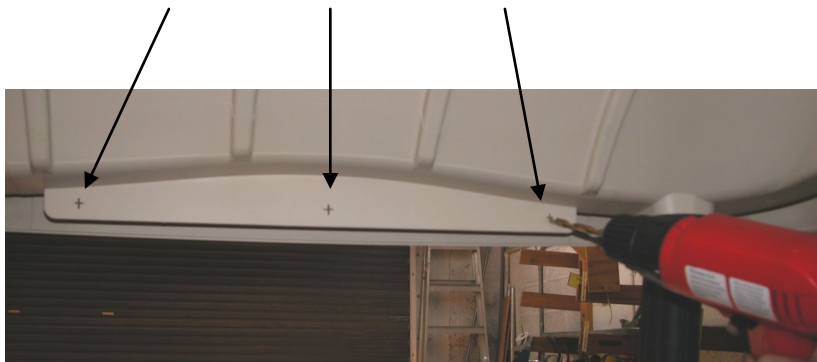
Flat Back Track— Line up tube of the track to the bottom edge of the outer ribs on the top. Mark top through holes drilled in track and drill 1/8" pilot holes no more than 3/8" deep into top. Secure with sheet metal screws provided in the kit.

NOTE: USE CAUTION WHEN DRILLING HOLES TO AVOID PUNCTURING TOP!



Finished view of installed rear track. See picture below for drilling instructions. After holes are drilled slide fender washer onto 2 1/4" bolt insert through hole from inside of top, then add a 1/2" and 1" spacer to bolt. Secure to track.

Rear Track— Measure & mark 1" from each side of flat plastic extrusion and 9" from either side for center mark. All marks should be 1/2" from bottom.

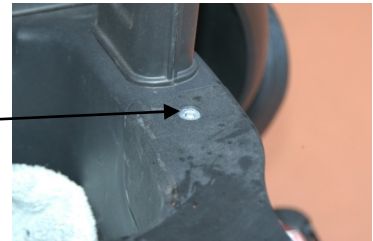


LJ's Tops & Bottoms, Inc.
561-736-7868

Remove and discard (2)
existing bolts from bag
rack



Replace the existing bolts
with the (2) supplied metal
inserts.



Place the Bag Par-Tector cross member on top of
the bag rack aligning the holes up with the newly
installed metal inserts. Then secure the Bag Par-
Tector cross member with the supplied 1/4" bolts
and washers.



LJ's Tops & Bottoms, Inc.
561-736-7868